

The Best Residential Architects in Orange County and Newport Beach, California

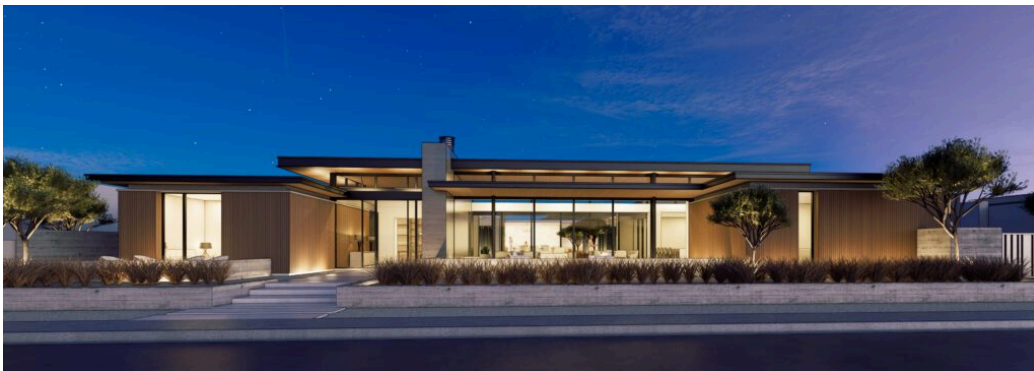
Robert Hidey Architects

3337 Michelson Dr, Suite 170, Irvine, CA 92612

With a rich history spanning 30 years, Robert Hidey Architects stands as a beacon of architectural innovation, crafting communities that elevate lives. The firm, led by President Robert Hidey, began in 1991, inspired by Hidey's upbringing in the scenic Palos Verdes Estates. Its commitment to diverse and award-winning residential designs sets it apart, a testament to its blend of art, history, creativity, and technology.

The firm's distinguished portfolio includes single-family, multifamily, attached and detached housing, mixed-use, mid-rise, interior architecture, and high-rise residential designs, reflecting a commitment to meeting clients' evolving needs. The company's approach involves meticulous attention to detail, with designs constantly refined from concept to construction, ensuring a harmonious blend of thoughtful solutions and aesthetic appeal.

The firm's dedication to research and development is evident in every project, adapting designs to regional nuances and evolving lifestyles. Its philosophy, guided by Robert Hidey's vision, prioritizes diverse work to stimulate and keep the team updated on housing trends. Robert Hidey Architects' success is underscored by over 400 industry awards and a loyal clientele.



One notable project is the Stone Crest residence, which was recognized with the 2023 Arizona MAME Award for Best Architecture Design in the \$1 million to \$1.5 million range.